

Pac Coast
Highway



CHOOSING THE RIGHT PATH IS
EASY WHEN YOU GEAR-UP WITH A
HIGH SIERRA® TRAVEL PACK



TRAVEL PACKS

High Sierra Sport Company
880 Corporate Woods Parkway
Vernon Hills, IL 60061-3164

Phone 847-913-1100
Toll Free 800-323-9590
Fax 847-913-1145
Toll Free Fax 800-323-9591



**HIGH SIERRA
SPORT COMPANY**



OFFICIAL SUPPLIER



OFFICIAL SUPPLIER

WWW.HIGHSIERRASPORT.COM



HIGH SIERRA®

ROAD WORTHY GEAR

TRAVEL SECURITY

NOW YOU CAN PROTECT YOUR IMPORTANT TRAVEL ITEMS. MOST OF OUR TRAVEL PACKS FEATURE A REMOVABLE DAY PACK THAT ATTACHES IN THE FRONT SO YOUR VALUABLES ARE BOTH EASY TO REACH AND EASY TO PROTECT AGAINST THEFT.



HIGH-TECH COMFORT

BY USING TEAR-RESISTANT FABRICS AND COMBINING THEM WITH MOISTURE WICKING PADDING HIGH SIERRA PROVIDES THE ULTIMATE IN HIGH-TECH DURABILITY AND COMFORT FOR TODAY'S TRAVELER. FEATURES LIKE WAIST BELTS STERNUM STRAPS AND LOAD LIFTERS MAKE EACH PACK FULLY-ADJUSTABLE FOR A SUPERIOR FIT.

MAXIMUM VERSATILITY

VERSATILITY IS OUR CALL TO ACTION AT HIGH SIERRA. SEVERAL OF OUR TRAVEL PACKS FEATURE A UNIQUE 3-IN-1 CONCEPT THAT ALLOWS THE TRAVELER TO CARRY THE PACK THREE DIFFERENT WAYS.



WHAT MAKES OUR PACKS BETTER? THE DETAILS!



MP3 Player Pocket with Headphone Port

Easy-access zippered pocket, with headphone port, provides a hands-free way to listen to music when you're on the go.



Compression Straps with Buckle Mounts

Minimize pack size for smaller loads and relieves zipper stress when pack is full.



Multi-Pocket Organizers

Feature pen pockets, multiple zippered pockets and handy removable key fobs.



1000ml Mesh Water Bottle Pockets

Easy-access mesh pocket designed to hold up to 1000ml polycarbonate bottles.

- 1 Large, front-load main compartment hinges open from the side for easier access and packing.*
- 2 Removable day pack, with padded backpack straps, has snap hooks that allows pack to be attached in front.*
- 3 Removable padded shoulder strap converts pack into a shoulder bag.*
- 4 Contoured webbing daisy chain is great for attaching extra gear.
- 5 Zippered pocket, with headphone port, holds an MP3 player or sunglasses.
- 6 Self-repairing, reversed zippers with contoured zipper pulls.
- 7 Vapel™ mesh padded grab handles wick hand moisture.
- 8 Dual-side compression straps, with molded buckle mounts, secure gear.
- 9 Reflective piping accents for added safety at night.



*Feature not found on all packs

BACKING OUR PACKS WITH THE LATEST TECHNOLOGY.



Contoured Aluminum Frame Bars*

Aluminum frame bars, which provide structure for the pack, bend to match the shape of your back for a proper fit.



ERGO-FIT Harness*

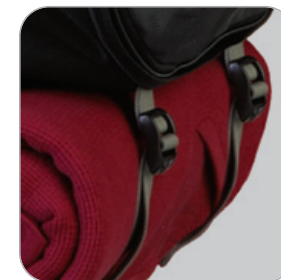
Adjusts for different torso sizes by moving the harness to the desired position then securing it through the webbing loops.



Vapel™ Mesh Airflow™ Padded Back

Designed to allow air to flow through the channels—keeping your back cool and dry.

- 1 Backpack straps, with ERGO-FIT™ shoulder harness, are hidden behind a zippered back panel.*
- 2 Adjustable load-lifters on each strap adjust the height of the pack to properly distribute weight of gear.*
- 3 Adjustable sternum strap helps stabilize the pack.
- 4 Vapel mesh AIRFLOW™ padded back has channels to keep air flowing between your back and the pack.*
- 5 Adjustable waist belt, with VAPEL™ mesh AIRFLOW™ padding, helps wick body moisture.



Adjustable Bottom Compression Straps*

Are great for attaching extra gear or securing a blanket, sleeping bag or jacket.



CHOOSING A PACK THAT FITS YOUR BACK.

USE THIS SIZING CHART TO HELP YOUR CUSTOMERS CHOOSE A PACK THAT WILL BEST FIT THEIR BODY TYPE. YOUR CUSTOMERS WILL FIND THIS SAME CHART ON THE PRODUCT TAG.

FIT/SIZING PACK NAME	UNIVERSAL FIT			STANDARD FIT		
	PASSPORT	TRANSPORT	EXPORT WHEELED	RAILPASS	COMPASS	OVERPASS WHEELED
FRAME LENGTH	18"	20"	NO FRAME	25"	27"	NO FRAME
SPACE BETWEEN BARS	NO BARS	NO BARS	NO BARS	6.5"	7"	NO BARS
HARNESS LENGTH	16"	16"	16"	17"	18"	17"
WAIST BELT SIZE	UP TO 54"	UP TO 54"	UP TO 55"	UP TO 54"	UP TO 54"	UP TO 55"
TORSO FIT RANGE	13"-17"	15"-19"	13"-17"	13"-21"	15"-22"	13"-21"
HEIGHT FIT RANGE	64"-68"	68"-72"	64"-68"	68"-72"	70"-74"	68"-72"

COLORS

BLACK
03

GRAPHITE
207

NAVY
404

CHIPOTLE
801

SYMBOL KEY



MULTI-POCKET ORGANIZER



MP3 PLAYER POCKET AND HEADPHONE PORT



VAPEL MESH PADDED SHOULDER STRAPS OR BACK PANEL



WATER BOTTLE POCKET



TR100 PASSPORT 2-IN-1

- Large front load main compartment with clothing hold-down straps.
- High-density frame sheet internal structure.
- Vapel™ mesh Airflow™ padded shoulder harness with Adjustable ERGO-FIT™ system.
- Adjustable load-lifters raise or lower the pack by simply pulling the webbing straps.
- Removable padded shoulder strap.
- Deluxe organizer with cell phone pocket, pen pockets, and removable key fob.
- Zippered pocket, with headphone port, holds an MP3 player or sunglasses.
- Adjustable side compression straps, with buckle mounts, help compress smaller loads and relieve zipper stress when pack is full.
- Bottom compression straps secure a sleeping bag, jacket or extra gear.
- Vapel™ mesh Airflow™ padded back and grab handles wick moisture.
- Vapel™ mesh Airflow™ adjustable padded waist belt helps secure the pack.
- Adjustable sternum strap, with quick-release buckle, stabilizes the pack.
- Contoured daisy chain for attaching gear.
- Reflective accent piping for safety.
- Mesh 1000ml water bottle pocket.

Materials: Duralite® Waffle Weave and 1680-Denier Ballistic

Colors:

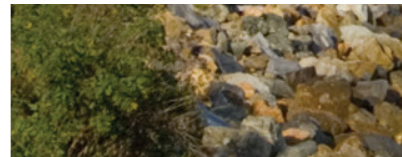
TR100-03: Black, Graphite
TR100-207: Graphite, Chipotle
TR100-404: Navy, Graphite

Size: 22 x 14 x 8.5 in
(55 x 35.5 x 22 cm)
Capacity: 2826 cubic inches



PANEL-LOAD

CAPACITY: 46-LITERS
FIT: UNIVERSAL
FRAME LENGTH: 18"
TORSO FIT: 13" TO 17"
HEIGHT FIT: 64" TO 68"
PACK WEIGHT: 3.5 LBS.



2-IN-1 VERSATILITY



Tuck-away shoulder harness is stored behind a zippered back panel.



The Padded shoulder strap is removable for easy storage.



TR101 TRANSPORT 3-IN-1

- Front load main compartment, with clothing hold-down straps, hinges open from the side for easier packing.
- High-density frame sheet internal structure.
- Removable day pack, with padded backpack straps, can be worn in front for security.
- Vapel™ mesh Airflow™ padded shoulder harness with Adjustable ERGO-FIT™ system.
- Adjustable load-lifters raise or lower the pack by simply pulling the webbing straps.
- Removable padded shoulder strap.
- Deluxe organizer with cell phone pocket, pen pockets, and removable key fob.
- Zippered pocket, with headphone port, holds an MP3 player or sunglasses.
- Adjustable side compression straps, with buckle mounts, help compress smaller loads and relieve zipper stress when pack is full.
- Bottom compression straps secure a sleeping bag, jacket or extra gear.
- Vapel™ mesh Airflow™ padded back and grab handles wick moisture.
- Vapel™ mesh Airflow™ adjustable padded waist belt helps secure the pack.
- Adjustable sternum strap, with quick-release buckle, stabilizes the pack.
- Contoured daisy chain for attaching gear.
- Reflective accent piping for safety.
- Mesh 1000ml water bottle pocket.

Materials: Duralite® Waffle Weave and 1680-Denier Ballistic

Colors:

TR101-03: Black, Graphite
TR101-207: Graphite, Chipotle
TR101-404: Navy, Graphite

Main Bag Size: 23 x 14.5 x 8.5 in
(58 x 37 x 22 cm)
Capacity: 3564 cubic inches

Day Pack Size: 14 x 12 x 5.5 in (35.5 x 30 x 14 cm)
Capacity: 860 cubic inches



PANEL-LOAD

CAPACITY: 72-LITERS
FIT: UNIVERSAL
FRAME LENGTH: 20"
TORSO FIT: 15" TO 19"
HEIGHT FIT: 68" TO 72"
PACK WEIGHT: 4.5 LBS.



3-IN-1 VERSATILITY



Tuck-away shoulder harness is stored behind a zippered back panel.



Removable day pack can be attached in front for added security.



The Padded shoulder strap is removable for easy storage.



TR102 RAILPASS 3-IN-1

- Front load main compartment, with clothing hold-down straps, hinges open from the side for easier packing.
- Removable, adjustable aluminum frame bars can be bent to fit the contour of your back.
- Removable day pack, with padded backpack straps, can be worn in front for security.
- Vapel™ mesh Airflow™ padded security harness with Adjustable ERGO-FIT™ system.
- Adjustable load-lifters raise or lower the pack by simply pulling the webbing straps.
- Removable padded shoulder strap.
- Deluxe organizer with cell phone pocket, pen pockets, and removable key fob.
- Zippered pocket, with headphone port, holds an MP3 player or sunglasses.
- Adjustable side compression straps, with buckle mounts, help compress smaller loads and relieve zipper stress when pack is full.
- Bottom compression straps secure a sleeping bag, jacket or extra gear.
- Vapel™ mesh Airflow™ padded back and grab handles wick moisture.
- Vapel™ mesh Airflow™ adjustable padded waist belt helps secure the pack.
- Adjustable sternum strap, with quick-release buckle, stabilizes the pack.
- Contoured daisy chain for attaching gear.
- Reflective accent piping for safety.
- Mesh 1000ml water bottle pocket.

Materials: Duralite® Waffle Weave and 1680-Denier Ballistic

Colors:
TR102-207: Graphite, Chipotle
TR102-03: Black, Graphite

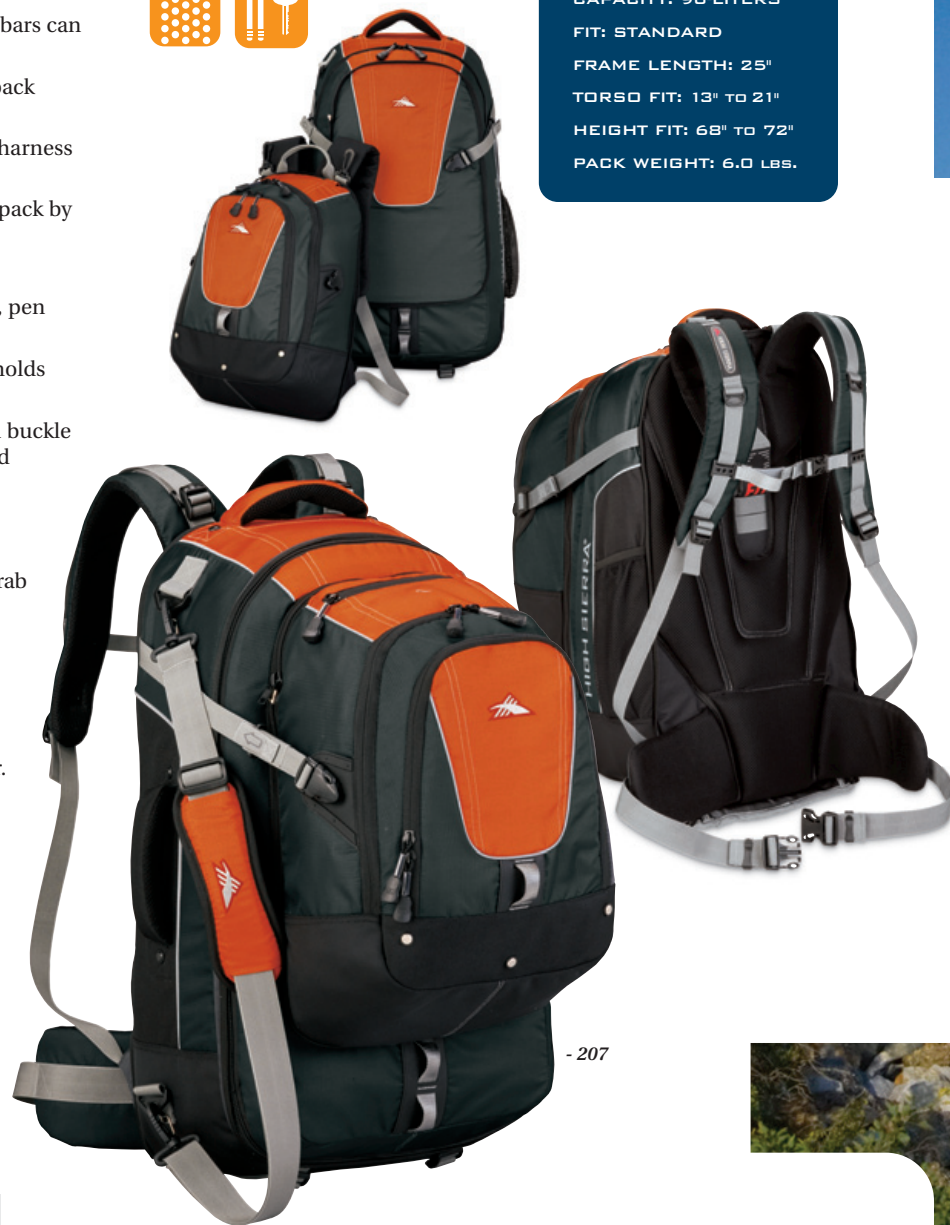
Main Bag Size: 26 x 15 x 9 in (66 x 38 x 23 cm)
Capacity: 5015 cubic inches

Day Pack Size: 14 x 12 x 5.5 in (35.5 x 30 x 14 cm)
Capacity: 860 cubic inches

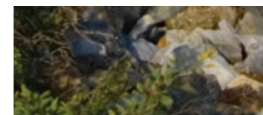


PANEL-LOAD

CAPACITY: 96-LITERS
FIT: STANDARD
FRAME LENGTH: 25"
TORSO FIT: 13" TO 21"
HEIGHT FIT: 68" TO 72"
PACK WEIGHT: 6.0 LBS.



- 207



3-IN-1 VERSATILITY



The Tuck-away shoulder harness is stored behind a zippered back panel.



Removable day pack can be attached in front for added security.



The Padded shoulder strap is removable for easy storage.



-03





TR103 COMPASS 3-IN-1

- Front load main compartment, with clothing hold-down straps, hinges open from the side for easier packing.
- Removable, adjustable aluminum frame bars can be bent to fit the contour of your back.
- Removable day pack, with padded backpack straps, can be worn in front for security.
- Vapel™ mesh Airflow™ padded shoulder harness with Adjustable ERGO-FIT™ system.
- Adjustable load-lifters raise or lower the pack by simply pulling the webbing straps.
- Removable padded shoulder strap.
- Deluxe organizer with cell phone pocket, pen pockets, and removable key fob.
- Zippered pocket, with headphone port, holds an MP3 player or sunglasses.
- Easy-access zippered shoe pocket.
- Adjustable side compression straps, with buckle mounts, help compress smaller loads and relieve zipper stress when pack is full.
- Bottom compression straps secure extra gear.
- Vapel™ mesh Airflow™ padded back and grab handles wick moisture.
- Vapel™ mesh Airflow™ adjustable padded waist belt helps secure the pack.
- Adjustable sternum strap, with quick-release buckle, stabilizes the pack.
- Contoured daisy chain for attaching gear.
- Reflective accent piping for safety.
- Mesh 1000ml water bottle pocket.

Materials: Duralite® Waffle Weave and 1680-Denier Ballistic

Colors:
 TR103-03: Black, Graphite
 TR103-207: Graphite, Chipotle
 TR103-404: Navy, Graphite

Main Bag Size: 29 x 15 x 10 in (73.6 x 38 x 25.4 cm)
Capacity: 5408 cubic inches

Day Pack Size: 14 x 12 x 5.5 in (35.5 x 30 x 14 cm)
Capacity: 860 cubic inches



PANEL-LOAD

CAPACITY: 103-LITERS
FIT: STANDARD
FRAME LENGTH: 27"
TORSO FIT: 15" TO 22"
HEIGHT FIT: 70" TO 74"
PACK WEIGHT: 6.8 LBS.



-03

3-IN-1 VERSATILITY



Tuck-away shoulder harness is stored behind a zippered back panel.



Removable day pack can be attached in front for added security.



The Padded shoulder strap is removable for easy storage.



-207

-404

TR104 EXPORT WHEELED

- Front load main compartment with clothing hold-down straps.
- Deluxe, telescoping handle and corner-mounted inline skate-style wheels.
- Adjustable, Vapel™ mesh Airflow™ padded backpack straps.
- Deluxe organizer with cell phone pocket, pen pockets, and removable key fob.
- Zippered pocket, with headphone port, holds an MP3 player or sunglasses.
- Adjustable side compression straps, with buckle mounts, help compress smaller loads and relieve zipper stress when pack is full.
- Vapel™ mesh Airflow™ padded grab handles wick moisture.
- Vapel™ mesh Airflow™ adjustable padded waist belt helps secure the pack.
- Contoured daisy chain for attaching gear.
- Reflective accent piping for safety.
- Mesh 1000ml water bottle pocket.

Materials: Duralite® Waffle Weave and 1680-Denier Ballistic

Colors:

- TR104-03: Black, Graphite
- TR104-207: Graphite, Chipotle
- TR104-404: Navy, Graphite

Size: 22 x 14 x 8.5 in (55 x 35.5 x 22 cm)
Capacity: 2826 cubic inches



PANEL-LOAD

WHEELED

CAPACITY: 46-LITERS
 FIT: UNIVERSAL
 TORSO FIT: 13" TO 17"
 HEIGHT FIT: 64" TO 68"
 PACK WEIGHT: 7.6 LBS.



- 404

2-IN-1 VERSATILITY



Tuck-away shoulder harness is stored behind a zippered back panel.



Corner-mounted wheels with tractor tire tread.



- 207

- 03

TR105 OVERPASS WHEELED

- Front load main compartment with clothing hold-down straps.
- Deluxe, telescoping handle and corner-mounted inline skate-style wheels.
- Removable day pack, with padded backpack straps, can be worn in front for security.
- Vapel™ mesh Airflow™ padded shoulder harness with Adjustable ERGO-FIT™ system.
- Adjustable load-lifters raise or lower the pack by simply pulling the webbing straps.
- Deluxe organizer with cell phone pocket, pen pockets, and removable key fob.
- Zippered pocket, with headphone port, holds an MP3 player or sunglasses.
- Adjustable side compression straps, with buckle mounts, help compress smaller loads and relieve zipper stress when pack is full.
- Vapel™ mesh Airflow™ padded grab handles wick moisture.
- Vapel™ mesh Airflow™ adjustable padded waist belt helps secure the pack.
- Contoured daisy chain for attaching gear.
- Reflective accent piping for safety.
- Mesh 1000ml water bottle pocket.

Materials: Duralite® Waffle Weave and 1680-Denier Ballistic

Colors:

- TR105-03: Black, Graphite
- TR105-404: Navy, Graphite

Main Bag Size: 29 x 15 x 10 in (73.6 x 38 x 25.4 cm)
Capacity: 5408 cubic inches

Day Pack Size: 14 x 12 x 5.5 in (35.5 x 30 x 14 cm)
Capacity: 860 cubic inches



PANEL-LOAD

WHEELED

CAPACITY: 96-LITERS
 FIT: STANDARD
 TORSO FIT: 15" TO 22"
 HEIGHT FIT: 68" TO 72"
 PACK WEIGHT: 9.8 LBS.



- 404

3-IN-1 VERSATILITY



Tuck-away shoulder harness is stored behind a zippered back panel.



Removable day pack can be attached in front for added security.



Corner-mounted wheels with tractor tire tread.



- 03